

SUMMER 1988

Sidwell Pioneers Computer Graphics For Smaller Applications

Through lengthy research and development, Sidwell has taken mapping another step beyond the days of manual drafting.

For many years, all maps had to be laid out by hand, then drawn and lettered by hand. Then Sidwell developed SIGNET®, a complete system involving computer graphics and a vast range of cadastral and other information. With SIGNET®, there is a central data base containing information which can be accessed by many departments.

After the development of SIGNET®, Sidwell saw the need for another kind of graphics information system, one which would be more suitable for smaller projects. Sidwell committed substantial time and professional expertise to develop an economical computer graphics workstation using the personal computer.

The first prototype was completed in 1986 and has been used by Sidwell personnel to give sales presentations and various types of demonstrations. Since 1986, the device and software have continually been refined. Now it can operate as a stand alone workstation, or in a network environment.

Sidwell's use of this microcomputer graphics network is best illustrated by the use of the system in its own office. Currently, there are 9 units in Sidwell's headquarters and the Company has found the device very effective and very efficient.

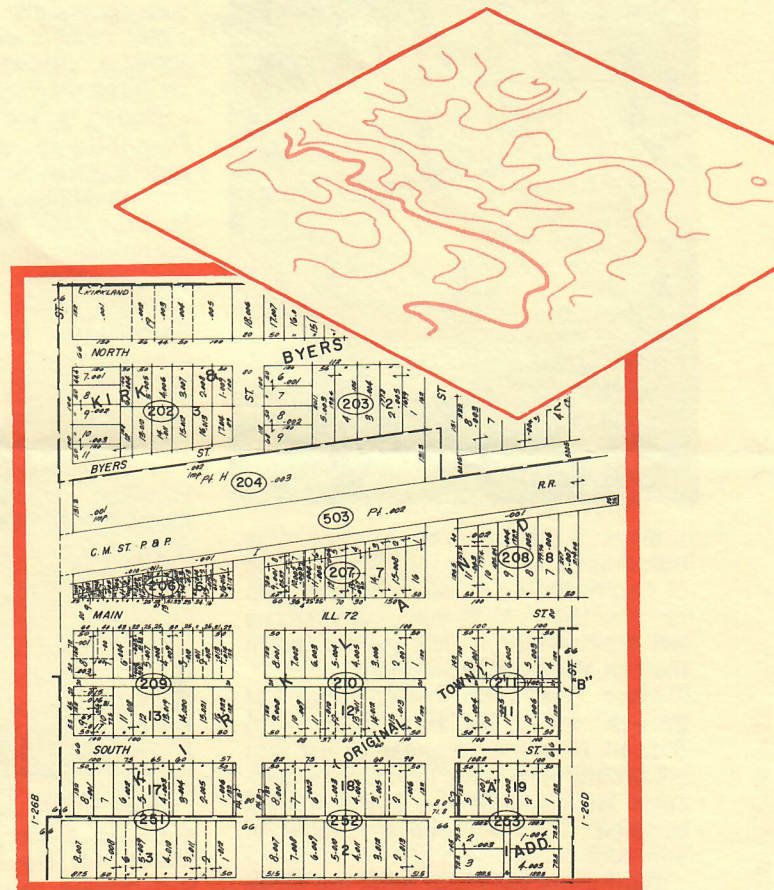
Each station consists of a personal computer, a color monitor, a digitizing tablet, a cursor, and graphics software. The software is Microstation marketed by Intergraph, and 100% compatible with Sidwell's Intergraph SIGNET® system. Sidwell uses Compaq 286 or 386 computers, but the system will work on a variety of IBM compatibles.

"This is a major change in procedures for doing cadastral mapping projects," declares Sidwell Director of Geographic Information Systems Tim Hopkins. "It makes cadastral mapping projects more attractive to a broader range of clients. This is an entirely new tool. Instead of having to search through a map book and pull out material, they can access the graphics information on a desktop computer.

"It also gives our clients the ability to add additional types of information. With a pen plotter, they can produce special maps for presentations, publications, or other purposes.

"At Sidwell, this new computer graphics network has improved our efficiency and economy of doing a project, and we can pass that savings on to the customer."

The new PC based graphics network is one more example of Sidwell's leadership in understanding client needs and developing the technology to serve these needs.



JONES, WORTH COUNTIES CONTRACT WITH SIDWELL

Sidwell is pleased to announce its association with two Iowa counties which have entered into contracts for cadastral mapping projects. Both will involve the use of PC based computer graphics systems.

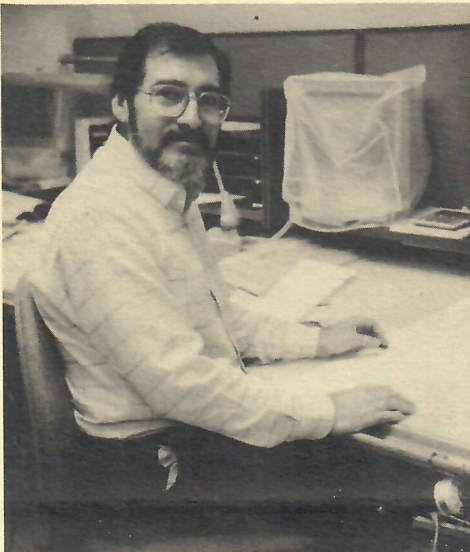
Worth County has 408 square miles, and about 10,700 parcels. Initial delivery of information will take place in November, 1988.

Jones County has 585 square miles, with approximately 18,600 parcels. The first delivery will be made in February, 1989.

This brings the number of counties Sidwell services in Iowa to 33.

MARV KNOPP MARKS 25 YEARS

Congratulations to Marvin Knopp, TMS Checker/Compiler, who celebrated 25 years with the Company on May 13.



Marv gained experience in topography with the U.S. Army Corps of Engineers, so it was a natural step to enter the field of mapping when he left the service in 1963. He started in the Tax Mapping Department.

Marv has seen many kinds of growth while he has been with Sidwell, from the purchase of the first electronic calculator to the first computer. He joined Sidwell at the present building, and has seen a number of additions here.

During his 25 years with the Company, Marv has been an asset in all production activities.

Congratulations to Marv Knopp, and Sidwell's thanks for his loyalty and service for 25 years.

THREE BRING EXTENSIVE BACKGROUND TO CID NET™ STAFF

As Sidwell's newly-introduced Computer Integrated Data Network (CID NET™) sees rapid growth, the Company is assembling a strong cross-section of talent. Three new members have been added to the staff, bringing a wide range of backgrounds and expertise in county government and computers.



ROGER NESS joined Sidwell as Programmer/Installer on March 7. He had previously worked in computer-aided design with Cimtech of Ames, Iowa, a company involved in computer-integrated manufacturing.

Roger is familiar with computers from the grass roots up. He personally orders parts for personal computers and assembles the units himself. He is especially knowledgeable in the technical aspects of computer programming.

Roger holds a B.S. in Computer Science from Iowa State University.



RON CLINE joined the CID NET™ staff as a Programmer/Installer on March 11. He had previously been with Globe Information Services in Tampa, Florida. Ron has extensive data base knowledge and has been involved in the installation of computer systems as well as staff training. He has considerable

programming experience in government, particularly with the Water Department of the City of Marion, Indiana.

Ron is a graduate of Indiana Business College and International Business College and has a B.A. in Accounting.



RON GATER came to Sidwell on March 18 as Programmer/Installer. Previously, he had his own company, Electronic Script Programming Co. E.S.P. provided programming services to county government and mental health agencies in the State of Iowa.

Bringing special expertise in county government to Sidwell, Ron was County Assessor for 10 years; 5 years each in Ringgold and Mahaska Counties in Iowa.

A man of wide interests, Ron Gater has also been a professional photographer. He holds a degree in landscape architecture and worked on economic development in southeast Iowa for two years under a Federal grant. He has been a parks planner and designer for the State of Idaho and a private landscape architect in Spokane, Washington.

Sidwell is pleased and proud to welcome to its staff the many talents of Roger Ness, Ron Cline, and Ron Gater.

WE WANT YOUR IDEAS!

Tell us what G.I.S. means to you. We may use it in our Masthead in the future. All entries must be received by October 31, 1988. Prizes will be awarded. Send entries to:

The Sidwell Company
P.O. Box M
West Chicago, IL 60185
Attn: Donna Cessna

LASALLE COUNTY COMPUTERIZES MAPPING SYSTEM

One of Illinois' largest counties, LaSalle County, has contracted with Sidwell to design and implement a mapping system using personal computers as its base.

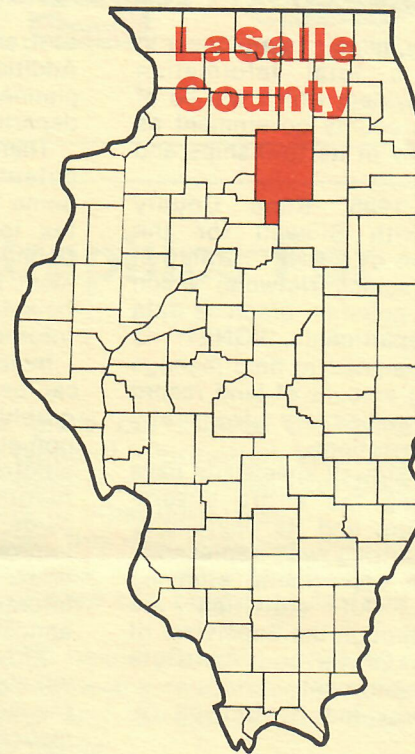
The system will allow LaSalle County staff members to:

- Maintain and update mapping information using personal computer workstations rather than erasing and redrawing maps manually
- Create overlays of information on the base map
- View and reproduce map information at various scales
- View and reproduce specific types of information as needed

In conjunction with the mapping system, Sidwell is taking the soil survey of LaSalle County and entering this information into a computer system to overlay the property maps. Then, acreage calculations by soil type will be generated. This will assist LaSalle County officials in implementing the Farmland Assessment Law of Illinois.

Sidwell's Bruce Harris, Senior Client Services Representative, has been working with LaSalle County Supervisor of Assessments, Robert Donahue, and other county officials. One of the largest counties in the State, LaSalle County has 32 geographic townships and covers 1150 square miles. It contains over 57,000 parcels.

Mapping information for the first townships will be delivered late this summer.



SIDWELL WILL BE THERE!

Sidwell representatives look forward to meeting clients and offering information to potential clients at a number of events during the year. Here are some of the meetings Sidwell will be attending:

July 31 - August 3

Michigan Assessors Association
Boyer Highlands, MI

August 7 - 9

National Association of Counties
Anaheim, CA

August 28 - September 1

Michigan Association of Counties
Bellaire, MI

September 7 - 10

International Association of
Assessing Officers
Nashville, TN

September 25 - 28

National Tax Association/
Tax Institute of America
Des Moines, IA

October 16 - 19

Iowa State Association of
Assessing Officers
Fort Des Moines, IA

November 16 - 18

Iowa State Association of Counties
Des Moines, IA

CID NET™ IN ACTION

Several Illinois and Iowa counties are reaping the benefits of CID NET™ (Computer Integrated Data Network), the state-of-the-art computer system which makes common information available to all departments. CID NET™ employs a PC network data base and allows individual departments to update their own information.

In DeWitt County, Illinois, the County's assessment files were transferred from their old Service Bureau system to CID NET™ in the fall of 1987. All Supervisor of Assessment functions have been implemented successfully. This includes state approved computer output Abstract Reports. In March, 1988, DeWitt County's CID NET™ system produced Accelerated Treasurer's Tax Statements ahead of the production scheduled date. The Treasurer's receipting system was put into operation at the same time.

Also implemented have been the Clerk's Fund, Tax District, and TCA levy control. The Clerk's Tax calculations and second half adjusted tax statements will be implemented by August as will the Clerk's Abstract Reports.

In Adair County, Iowa, all property record assessment data has been entered into the Assessor's system. This was accomplished by a team

effort of dedicated Adair County people in just four months. All Auditor's and Treasurer's tax cycle functions were then implemented and Tax Receipt statements were printed in late June. Adair was the first county in the State to complete printing during its tax statements.

In Cerro Gordo County, Iowa, the Board of County Supervisors signed an order for a CID NET™ Tax Cycle system in April, 1988. Terms of the agreement gave the CID NET™ computer staff less than 90 days to make a full conversion from the old computer system to the new, so that the Treasurer's receipting system for Taxes, Drainage, Specials, and Mobiles would be in place and operating by the first part of July.

CID NET™ Manager Ron McKeown comments, "This level of customer service was made possible by the very broad and deep experience level of the CID NET™ governmental computer specialists.

"The combination of governmental programming specialists, governmental analysts, and governmental systems specialists provides our clients with the highest and most responsive level of computer professional support available in the industry."

KANE COUNTY LEADS THE WAY

Kane County, Illinois is a pioneer in establishing a total information management system which will be of great value to county government as well as to many of its townships and municipalities.

In April, 1985, Kane County contracted with Sidwell for the implementation of SIGNET® (Sidwell Interactive Graphics Network) which will provide a common graphics data base for all departments. SIGNET® is specifically designed to help manage the increasing amount of land record information necessary for daily government operations.

Since then, Sidwell specialists have been analyzing the entire governmental structure and its operations. They are conferring with representatives of each department, studying their needs. All activities are coordinated through the Supervisor of Assessments Office and the Data Processing Department.

Services provided by Sidwell include:

- Acquisition of aerial photography
- Development of a ground control network through the use of field surveying and analytic aerial triangulation
- Preparation of orthophotos
- Data conversion of the existing cadastral mapping system
- Data conversion of topographic data
- Software development
- Training county personnel
- Assistance in the acquisition and installation of hardware

Kane County has encouraged the participation of the municipalities and townships in the County. The City of Geneva has unanimously approved the leasing of the data base on an annual basis and has purchased its own equipment including PC based workstations. Other municipalities are considering similar moves.

Once the common data base nears completion, a stand-alone graphics system is planned for the Kane County Government Center. Equipment being considered includes the central processing unit, graphic workstations, electrostatic printers, pen

plotters and data storage units. Additional PC based workstations are planned for implementation across all departments and municipalities.

There is virtually no limit to the potential for information overlays. Some of those contemplated include tax levy entities, election district boundaries, soils information, pavement lines, land use data and zoning boundaries as well as municipal utility information.

In addition, a non-graphic data base can be created and linked to the geographic data base. Some possible non-graphic data bases which are electronically related to graphic features include property record cards, property tax descriptions, tract indexes, sales history of properties, crime and fire statistics, and utility information. Potential for expansion is almost without limit.

Sidwell salutes Kane County, Illinois for being a leader in acquiring the most complete and effective information system available for the service of its citizens.

AER-O-MAPS AVAILABLE FOR NORTHERN ILLINOIS

Precisely-scaled aerial photographs are available depicting the Illinois counties of Lake, McHenry, Cook, DuPage, Kane, Will, Grundy, and Kendall.

Each 33" by 33" photo covers four square miles at a scale of 1" = 400' (13.2" per mile). Photographs are free of foliage for optimum viewing of ground details.

Sidwell's Aer-O-Maps are widely used by city, township and county governments for planning roads, zoning, drainage, police patrols, and other needs. Others who use them include:

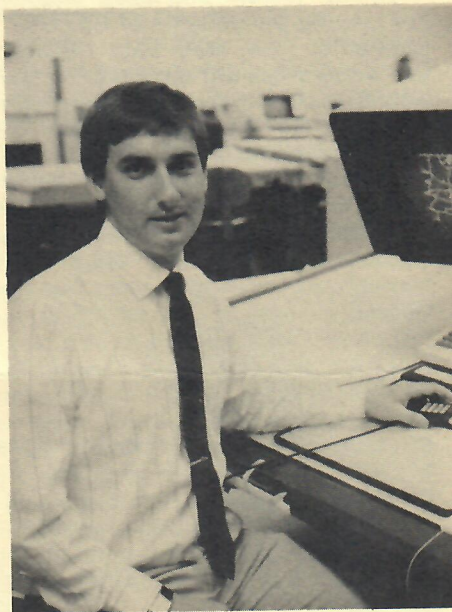
*School districts - for planning new school locations and establishing bus routes.

*Businesses - for delivery routes, sales territories, new locations, and more.

*Realtors and developers - to locate houses, improvements, roads, property lines, vacant land, etc.

For more information, contact Sidwell's Customer Service Hotline, 312-231-8200.

MAINZINGER JOINS SIGNET® STAFF



Brent Mainzinger has recently joined the SIGNET® Department (Sidwell Interactive Graphics Network). As SIGNET® Customer Engineer, he is responsible for customer support for the installation of SIGNET® data bases and the training of clients in the use of SIGNET® software. Brent will also be responsible for integrating SIGNET® GIS databases with alternate GIS software/hardware configurations.

Brent joined Sidwell on April 15. He had previously been with Aerial Information Systems of Redlands, California, a subsidiary of ESRI. He brings programming experience with dBase III and extensive knowledge of ARC/INFO.

Brent has a B.S. degree from the University of Wisconsin in Geology and Geophysics and a M.S. from the University of California in Geology.

SIGNET® is a registered trademark of The Sidwell Company.
CID NET™ has been submitted for registration by The Sidwell Company.



THE SIDWELL COMPANY

FOR FURTHER INFORMATION ON ANY SIDWELL SERVICES ...

Write to The Sidwell Company, 28W240 North Avenue, West Chicago, IL 60185 or phone (312) 231-0206

© 1988 The Sidwell Company, West Chicago, IL 60185